



## PROJECT HIGHLIGHTS

- 19 Eco Dwellings (Fully Furnished) Spread Over 40,000 Sft Of Terraced Land
- Parking Floor
- Gated Getaway Living
- Minimum Carbon Footprint
- Designed Around Nature
- Round The Year Access
- Managed, Secured & Serviced 365 Days Of The Year
- Usage Of Eco-friendly Materials, Augmenting The Natural Habitat
- Surrounded By Forrest Lands, Ideal For De-tox

@salaarheights.pk @salaarheights

### SITE OFFICE

Salaar Heights, Lower Jhika Gali, Lawrence College Road, MIT Murree

### HEAD OFFICE

Head Office, Amin Mansion GT Road, Peshawar

Tel: +92 310 1011 110

salaarheights.pk  
info@salaarheights.pk

## Salaar Heights

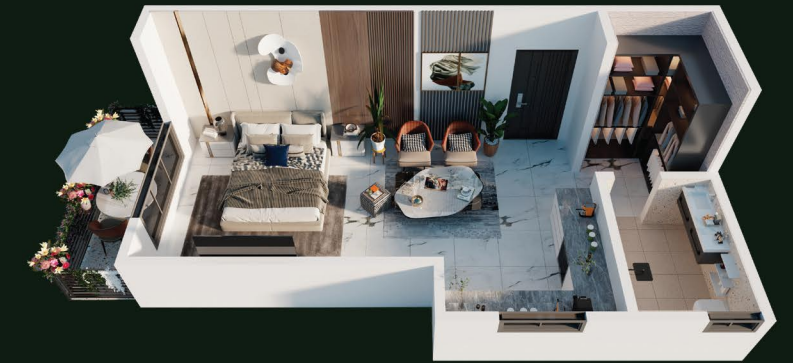
We have set the standard of excellence in property management by continuously exceeding our resident's expectations in everything we do. At Salaar Heights, we are dedicated to providing our residents with the quality, comfort and convenience they deserve.

# Salient Features

- Heating & Air Conditioning
- CCTV Systems
- Fire detection system
- Imported Bath Accessories
- Fully furnished
- Imported tiles and fixtures
- Italian bath accessories
- Outdoor wooden decks
- Dedicated Concierge
- WIFI / Satellite LED TV
- Gated LifeStyle
- Secure Parking
- Smart Locks
- Patio / Outdoor furniture
- Thermal insulation
- Fireplaces
- 24/7 Security
- Elevators
- Maintained by Developer
- ECO Friendly Materials
- Back Up Power Generators
- 360 degree views



Covered Area  
762 sft.



Studio  
Apartment

- Bedroom
- Bathroom
- Balcony
- Living
- Kitchen

## Location Map



Covered Area  
1165 sft.



02 Bedrooms  
Apartment

- 02 Bedroom
- 02 Bathroom
- 03 Balcony
- Living
- Kitchen

## About Apartments

The apartments are built on the concept of "You Design, We Build". Your apartment embraces you with a fine sense of freedom as you can customize your apartment. Welcome lounge and a guest area for visitors, an elevator, and 19 corner apartments are built to showcase exclusivity, opulence, privacy, world-class studio, and Apartments. One of the most exciting features is the design of the apartments as every apartment is a corner apartment and gives you a feeling of pride and privilege. Despite the luxury and sheer size of the project, the construction is sturdy enough to withstand the might of any known seismic activity.



Covered Area  
1744 sft.



03 Bedrooms  
Apartment

- 03 Bedroom
- 03 Bathroom
- 03 Balcony
- Living
- Kitchen